



POOR



FOLIO



About us

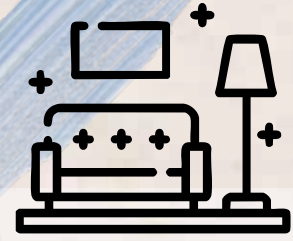
With over 15 years of industry expertise, Aakritiliving is a premier interior design firm known for its innovative, elegant, and functional spaces. Driven by a passion for design excellence, the firm specializes in creating bespoke interiors that reflect each client's unique vision and lifestyle. InDesign's client-centric approach ensures every project is a seamless blend of creativity, collaboration, and attention to detail—delivering results that inspire and endure.

Specializing in high-end residential interiors, budget interiors, commercial environments, and hospitality spaces, we bring a refined sense of style, functionality, and innovation to every project we undertake. We have delivered more than 50 projects across different locations in Hyderabad. We have also served our esteemed clients in Bangalore, Mumbai and Chennai as well.

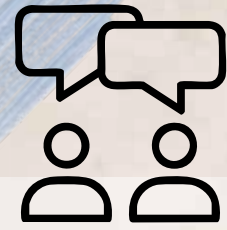
Vision

To expand across cities in India and beyond, becoming a trusted name in thoughtfully crafted living spaces. At Aakriti Living, we envision transforming every house we touch into a warm, personalized home — blending innovation, aesthetics, and functionality to enrich lives around the world.

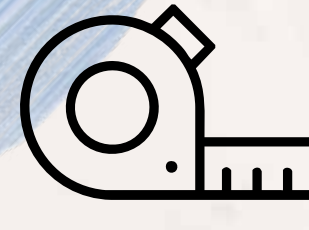
What we do



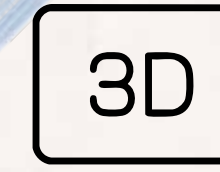
Interior Design



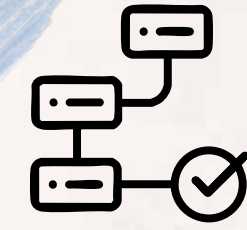
Design Consultation



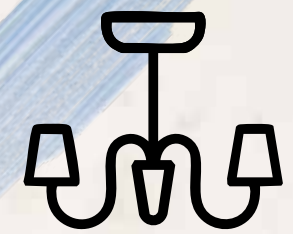
Space Planning



3D/Renders



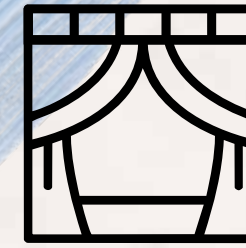
Project Management



Lighting Design



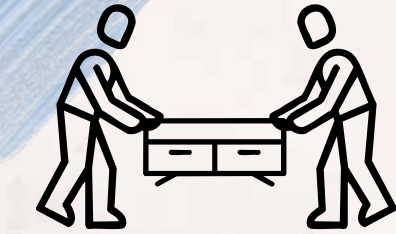
Custom Furniture Design



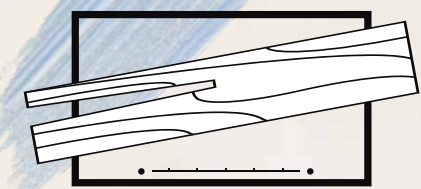
Furnishings



Art & Accessory Procurement



Styling & Staging



In-House Modular
Factory



Turnkey Projects

Why Choose us

At Aakriti Living, we do more than just design interiors – we create spaces that reflect ones personality, enhance lifestyle, and bring lasting comfort.

We stand unique from other interior design firms in following ways:

Fully personalized designs

We design spaces that align with your routines, culture, and aspirations (unlike template-driven firms).

On-time delivery

We're committed to clear communication, detailed planning, and sticking to timelines – no hidden costs, no unexpected delays.

Exceptional material quality

Every space we design reflects our uncompromising commitment to quality, durability, and craftsmanship. From elegant laminates to high-density boards, soft-close hardware to scratch-resistant finishes – we source only the best.

Seamless project management

From concept to completion, we handle everything – planning, design, sourcing, and execution. You get a hassle-free experience and a beautifully finished space.

Value for money

We make the most of your budget with cost-effective design solutions and latest building materials.

Our Footprint



Our Projects

01

Project: Alaya Nivasa

Location: Hyderabad

Year: 2022

Floor area: 12,000 Sft

Type: Individual residence

Brands: Miele, Blum, Asian Paints, Paradigm, Saint Gobain, Fenesta, Luminis,

Furniture: Longhi, Punt

Brief:

The client wanted a home that carried personal touches, stayed rooted in who they were, and truly resonated with their journey so far.

Our vision was to create a space that told their story – not through grand statements, but through thoughtful details. We hoped for a home where every corner reflected a memory, every material held meaning, and every room felt intentional. From heirloom-inspired elements to cozy, lived-in nooks, we wanted the design to be both soulful and authentic.

It was important for us that their roots, values, and experiences were woven into the design – something that felt timeless, warm, and deeply personal. We didn't want a generic or trendy space – we wanted a home that was a true extension of who they were, where every piece and palette had purpose.



What we did:

Set across a sprawling 12,000 square feet, this residence is not just a home—it is an experience, a seamless composition of architecture and soul. Nestled in a quiet, lush corner of the city, the home opens like a well-composed raga—layer by layer, space by space—drawing you into its quiet confidence and curated elegance.

From the moment you enter, there is a sense of calm. Every element feels precisely where it belongs, as if chosen not only with the eye but with the heart. The design doesn't scream for attention—it speaks in harmony, in the fluent language of Indian tradition and contemporary sophistication.

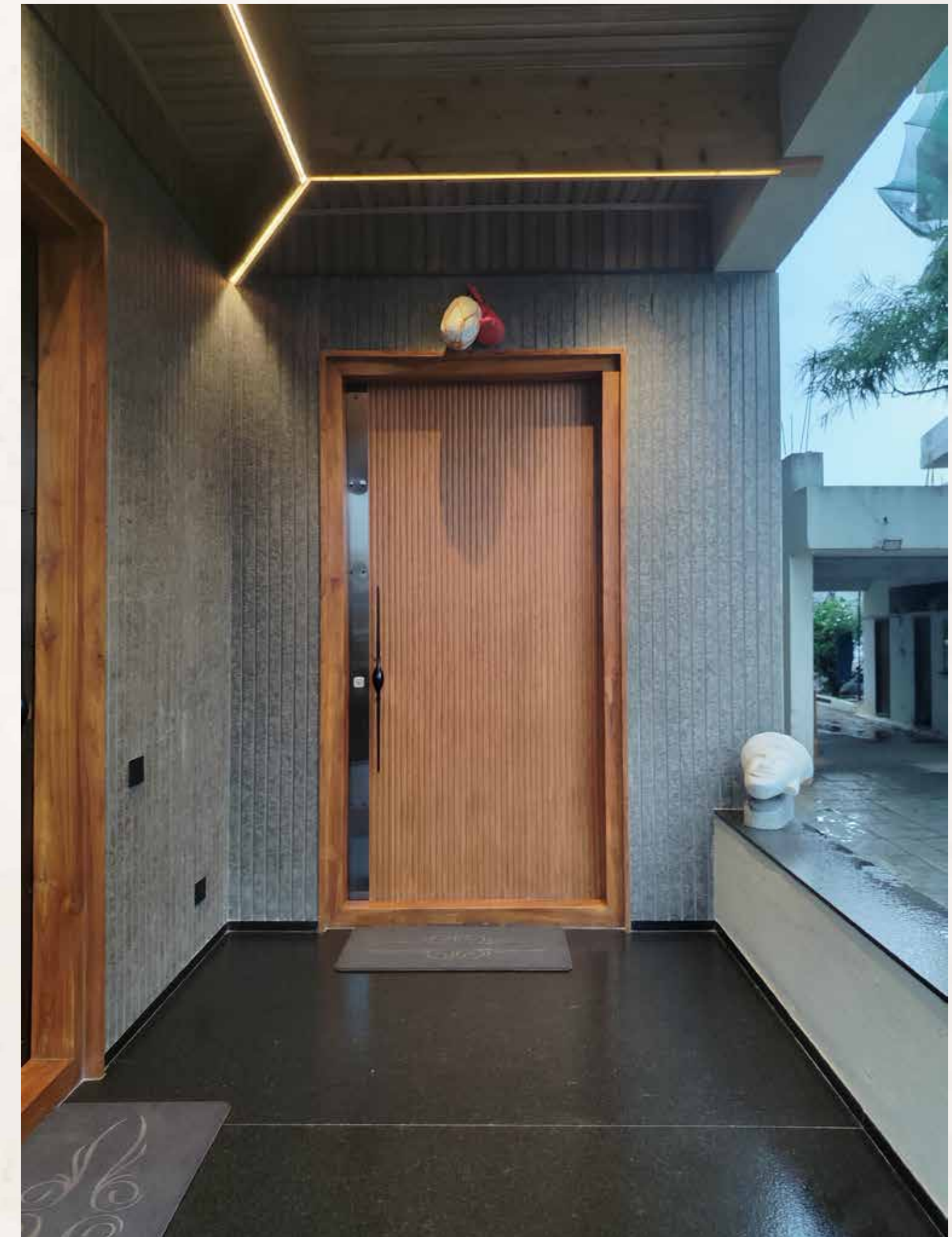
The interiors are a poetic blend—the rooted richness of Indian craftsmanship fused with clean, modern lines. This dialogue of eras plays out subtly but powerfully, forming a narrative that is both deeply cultural and unmistakably current.



Ceilings That Crown the Home

Look up, and the story continues. The ceilings are not mere afterthoughts, but architectural statements—crafted with exquisite woodwork that weaves warmth into the very air. Each panel, beam, and joint tells its own tale of grain and texture. The wood, selected carefully for tone and soul, forms a canopy of quiet luxury that connects every room with a sense of continuity.

In some areas, the ceiling flows in rich walnut tones, adding depth and gravitas. In others, lighter timbers open up the space, lending it an airy, contemporary feel. This thoughtful layering of wood and shadow guides the eye, offering rhythm to the visual journey.





Doors That Define and Personalize

Across the residence, the doors stand as functional sculptures—each custom-crafted, personalized to reflect the character of the space it guards. These are not generic openings, but tactile experiences. The grain of every wooden panel has been hand-selected for pattern, tone, and emotional resonance. Whether it's a deeply knotted rosewood for a stately study or a subtle teak for a sunlit lounge, each door tells its own story—one of materiality, of texture, of home.



The Play of Light and Shadow

But what truly breathes life into this space is light—layered, nuanced, ever-changing. It pours in naturally during the day, dancing off the wooden finishes and polished surfaces. By evening, a meticulously planned lighting design takes over, casting a golden glow that gently embraces every edge and corner.

Decorative pendant lights, recessed glows, and custom-designed chandeliers work in harmony—not to overpower, but to uplift. The warmth of the light deepens the wood tones, creating a sense of intimacy and belonging even within such grand proportions.

Each room holds its own atmosphere, its own emotional temperature, sculpted carefully through the choreography of light and surface. There are spaces that feel festive and expansive, others that feel meditative and still. Yet, all of them share a common thread: an unmistakable sense of home.

Where Function Meets Feeling

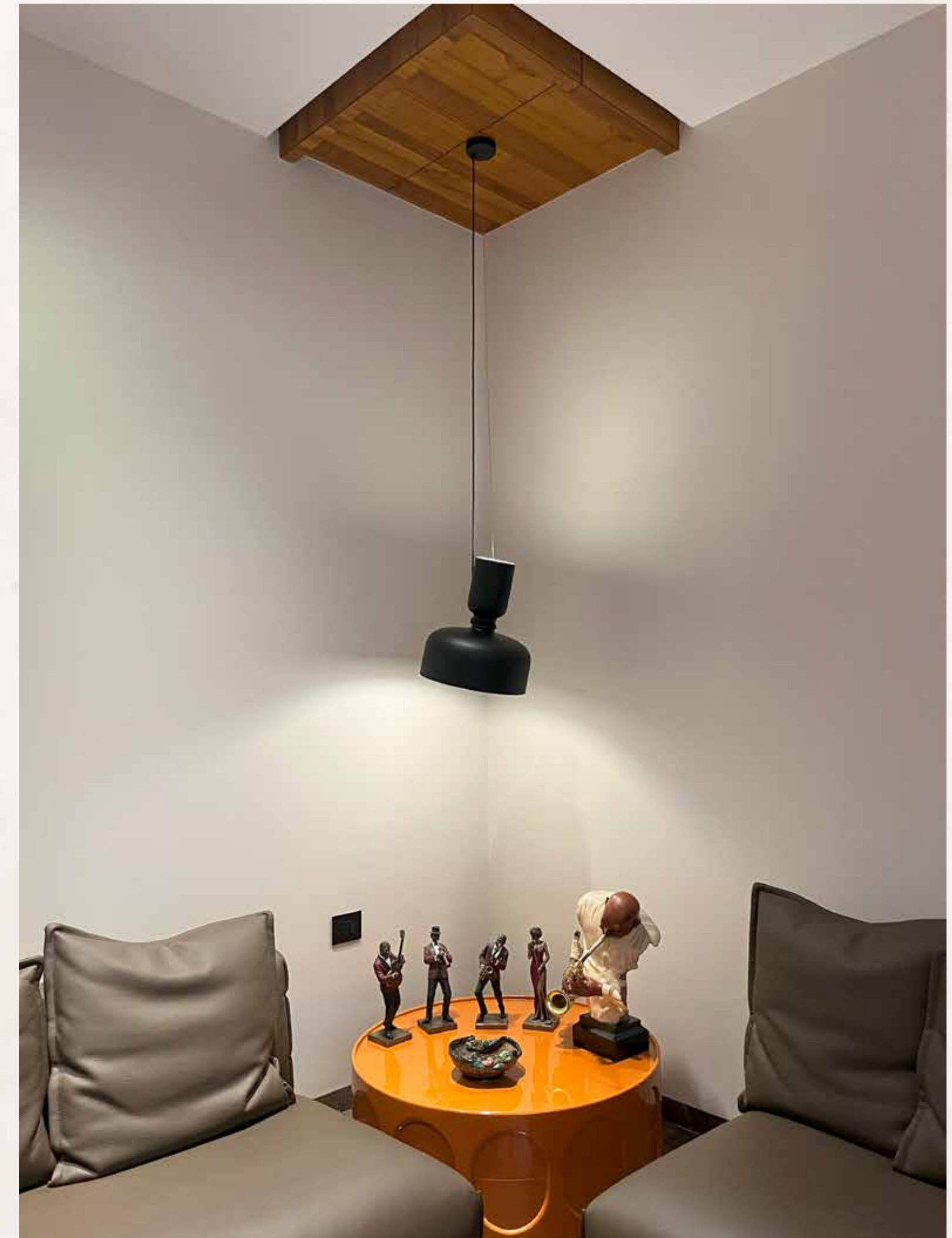
This home is not merely beautiful—it's intelligent. Every spatial decision has been made with purpose. Circulation flows effortlessly, guiding guests from public zones into private retreats. Materials were chosen not only for their aesthetic value but for how they respond to touch, time, and the senses. Textiles soften the acoustics, artwork adds quiet punctuation, and accents—whether brass, stone, or cane—create layers of tactile delight.

Global Artifacts, Personal Touches

The soul of the residence is perhaps most vividly expressed through its collection of artifacts—handpicked from across the globe, each one a whisper of culture, memory, and personal meaning.

Together, these curated pieces transform each room from a styled setting into a narrative of the homeowners' journey—across borders, through time, and into self. The home doesn't just reflect their taste; it reflects their path.

In the end, this home is not just an interior—it is an emotion, materialized. A sanctuary where past and present converge through hand and heart, where materials breathe, light listens, and objects tell stories. A residence where every detail, no matter how silent, speaks of belonging.



Project: Corals

Location: Hyderabad

Year: 2023

Floor area: 2162 Sft

Type: Flat - 3 BHK

Brands: Edison, Atomberg, Hettich, Asian Paints, Paradigm, Saint Gobain,

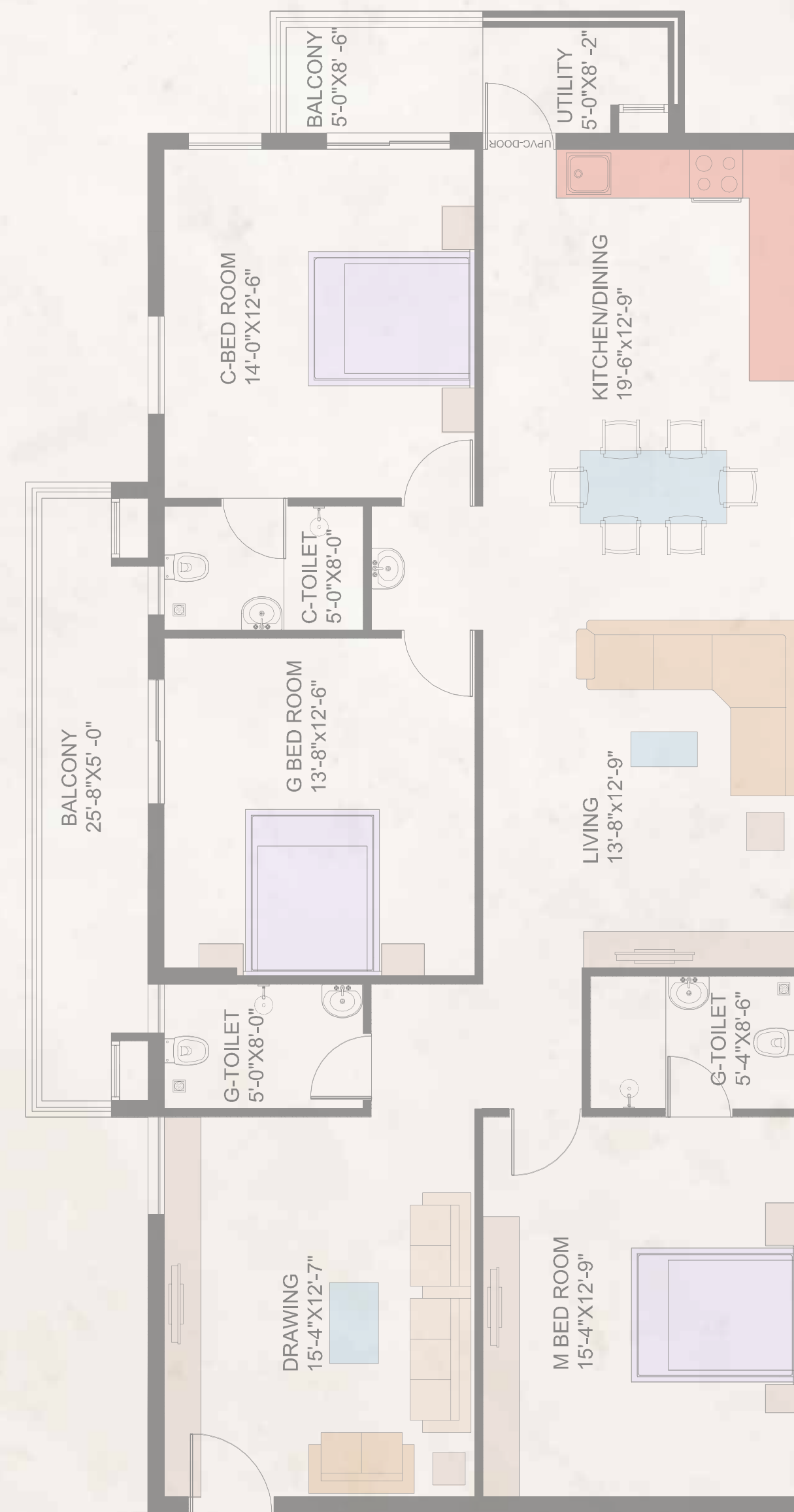
Furniture: Customised

Brief:

The client wanted his residence to speak about timeless Indian craftsmanship – a space envisioned by the client as a soulful blend of heritage, culture, and artistry. From the outset, the brief was clear: to create a home that reflects the richness of Indian traditions through every detail – with warmth, depth, and character.

Wood became the soul of the space – intricately carved cornices, handcrafted furniture, and traditional jali patterns brought in a regal yet grounded charm. The choice of colors leaned into earthy tones, deep ochres, rich teals, and muted maroons, all inspired by classic Indian palettes found in heritage homes and temples.

Art played a key role, with carefully curated paintings and wall accents that narrate stories of India's cultural legacy. Every element – be it the swing in the courtyard, the brass inlays, or the hand-painted murals – was chosen to celebrate India's rich design language.



Floor Plan



What we did:

It begins with a door—simple, unassuming— but once opened, it welcomes you into a story carefully written in light, texture, and thoughtful detail.

This is a home where design meets emotion, where every space feels like it has something to say.

The living area is the heart of the story. Spacious yet cozy, it unfolds in a harmony of colors and shapes. Sunlight pours in through large windows, bouncing off soft-toned walls and polished finishes. The furniture, curated rather than chosen, adds depth—modern in form, yet warm in soul. Artifacts from distant cultures sit beside contemporary pieces, each one adding a whisper of history, a note of character. Overhead, decorative lights cast a gentle glow, as if illuminating not just the room, but the moments to be lived within it.

Beyond the living space lies a kitchen that is both modern marvel and everyday muse. With sleek surfaces, smart appliances, and bold, clean lines, it invites creativity. The materials are innovative—stone, steel, and glass combining in elegant form. But beyond the function, there's feeling here too. The fusion of design styles creates a kitchen that doesn't just serve meals—it inspires them.

The story continues into three bedrooms—each one a quiet retreat. No two rooms are quite alike, yet all share a sense of calm. The palette is soft and inviting, the materials tactile and grounded. Thoughtfully placed furniture and gentle lighting create corners meant for rest, reflection, and morning sunlight. It's in these rooms that the house truly becomes a home—spaces meant for dreams, for pauses, for peace.

And yet, it's the details that complete the story. A fusion of cultures and eras flows throughout the home—woven through fabrics, carved into wood, echoed in metal and stone. The materials are not just seen, but felt. Every color, every finish, every surface has been chosen to evoke a sense of belonging.

This residence is not just a showcase of style—it's a place with a soul. A place where design has been used not to impress, but to embrace. A space where the story of home has been told, not with words, but with warmth, beauty, and intention.

Good design doesn't just shape space. It shapes the way we live, feel, and connect.



Project: Baylight Residence

Location: Hyderabad

Year: 2024

Floor area: 5040 Sft

Type: Residence

Brands: Edison, Atomberg, Hettich, Asian Paints, Paradigm, Saint Gobain,

Furniture: Customised

Brief:

The client envisioned a home that exudes understated luxury — a harmonious blend of regal essence and modern-day elegance. Their desire was to create an interior that felt refined and timeless, with contemporary elements brought to life through a palette of soft beiges, warm neutrals, and rich textures. They wanted each space to feel calm yet opulent, where sophistication was expressed not through excess, but through thoughtfully chosen materials and finishes.

They were particular about maintaining a sense of flow and openness across the layout, with an emphasis on natural light, soft ambient tones, and luxe fabrics that enhanced the serene ambiance. The home was to be a retreat — one that felt graceful, polished, and deeply personal, reflecting both their taste for modern design and admiration for timeless grandeur.



Floor Plan

What we did:

Tucked away in one of Hyderabad's most prestigious waterfront locales, this premier residence tells a story of refined living—brought to life through the transformative vision. From a blank canvas to a sophisticated modern haven, the design narrative unfolds in layers of texture, light, and thoughtful spatial planning.

As you step into the apartment, your eye is immediately drawn to the dramatic feature wall—a true focal point of the space. Clad in large-format marble-inspired tiles, its soft veining contrasts beautifully with gold fluted panels, creating a rich interplay of materials that exudes both opulence and restraint. This wall was designed not just as an architectural feature, but as a statement piece anchoring the living area's aesthetic.

Open display shelving, integrated seamlessly into the design, invites curated styling—ideal for showcasing art objects, books, and cherished collectibles. These open elements offer a moment of visual pause against the more solid finishes, adding dimension and personality.



The material palette is grounded in muted tones and earthy textures, inspired by a calm, contemporary mood board. Walls are wrapped in textured wallpapers in subtle, neutral hues, providing a soft tactile backdrop that elevates the space without overwhelming it. The overall color scheme—dusty taupe's, gentle greys, and warm beige undertones—helps create a serene, cohesive flow throughout the apartment.

In the kitchen, functionality meets style in a masterclass of space optimization and daylight maximization. The once-enclosed service yard wall was thoughtfully removed, allowing the kitchen to borrow natural light from its adjacent window. This subtle architectural intervention changed everything—flooding the space with sunlight and creating a much more open, air-filled environment.

Here, large tile formats on the floor and backsplash visually stretch the space, while a marble-look countertop and full-height backsplash bring in a touch of luxury. The extended quartz tabletop doubles as prep area and casual dining space, enhancing both usability and elegance.



Storage was a priority—delivered through custom top and bottom cabinetry finished in matte laminates that echo the overall palette. These units were designed not only to house large cooking appliances, but also to keep the space clutter-free and highly functional—perfect for a household that loves to cook and entertain.

A clever design move lies behind the laminated feature wall, where a hidden door conceals the entrance to the helper's room. This seamless integration maintains visual consistency and adds an element of architectural intrigue.

Every design choice in this residence reflects a commitment to both style and substance. From the deliberate material selection to the nuanced lighting strategy and the layering of finishes, the interiors were shaped to evoke a refined sense of place—a private sanctuary where function, beauty, and comfort are held in perfect balance.

When design and emotion intertwine, a house transforms into a home—one that welcomes, inspires, and endures



Project: Serene Luxe

Location: Hyderabad

Year: 2024

Floor area: 5216 Sft

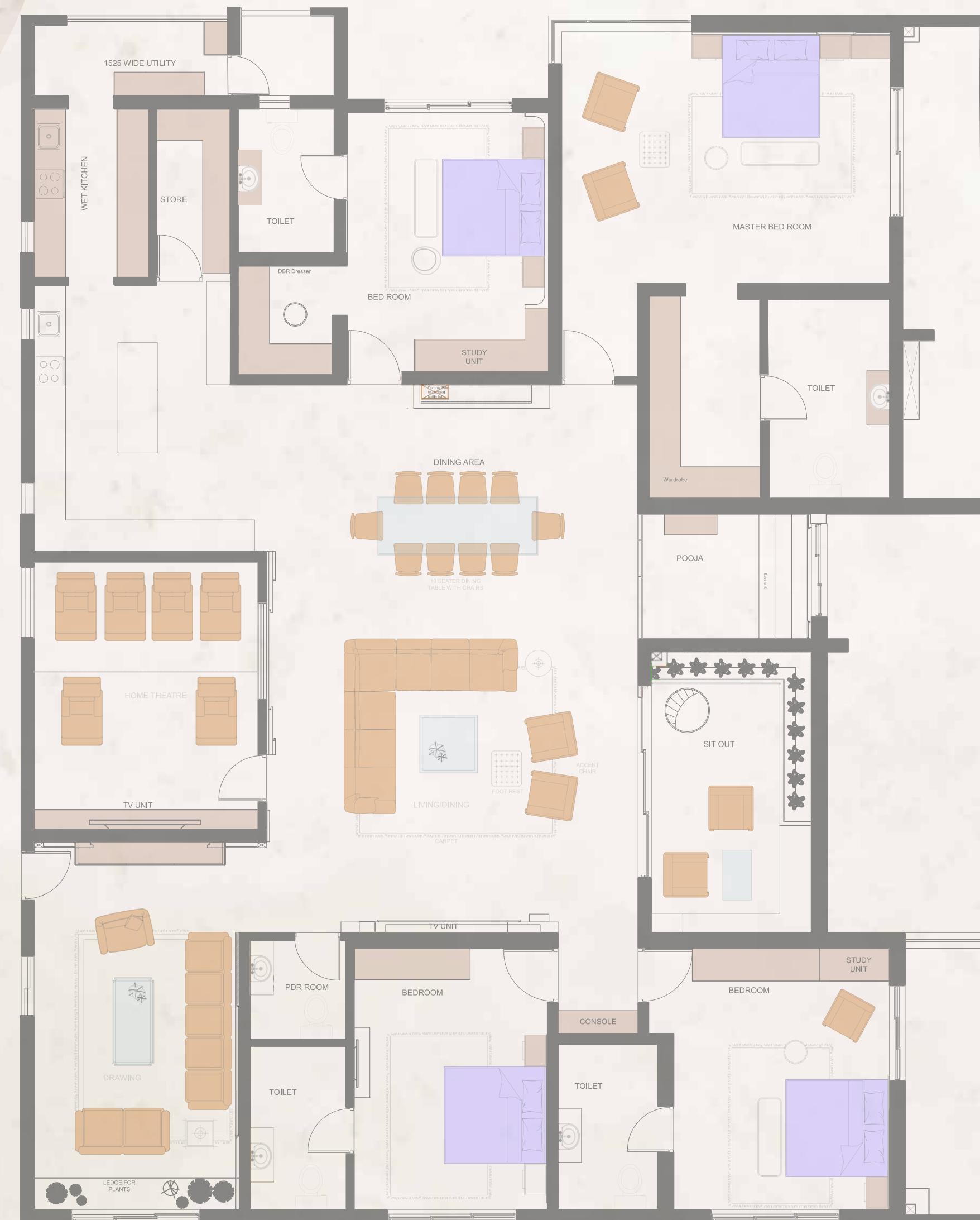
Type: Flat

Brands: Edison, Atomberg, Hettich, Asian Paints, Paradigm, Saint Gobain,

Furniture: Imported

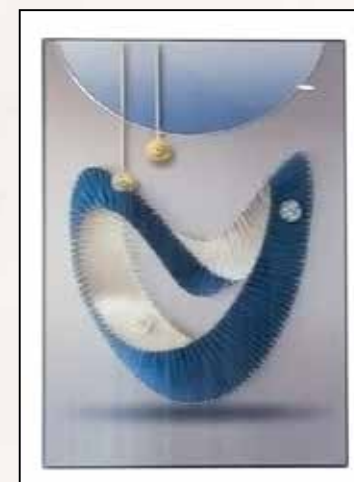
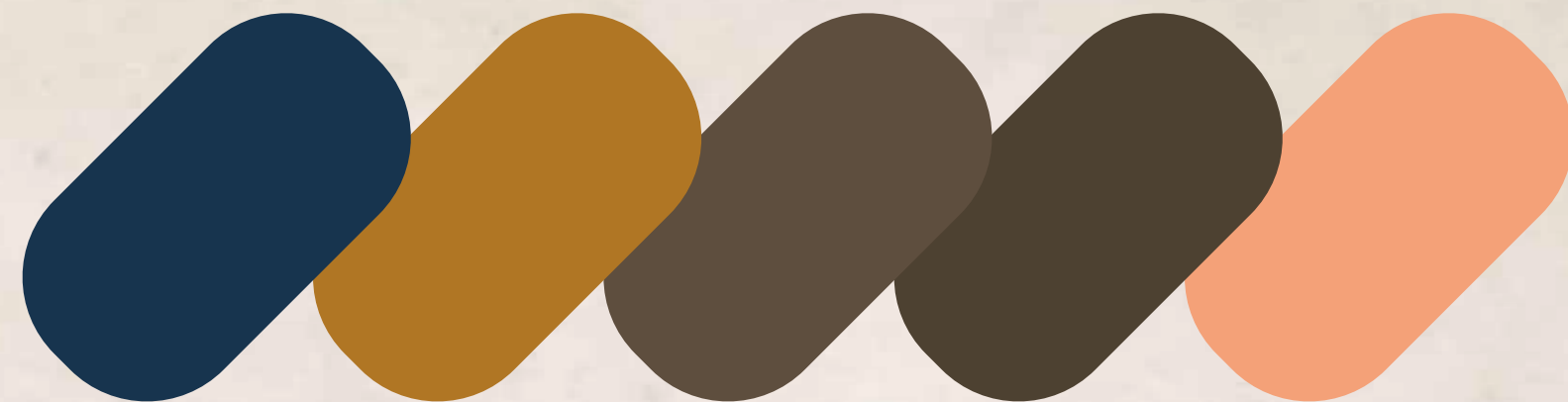
Brief:

The client came to us without any predefined ideas or design preferences—just a blank canvas full of potential. This gave us the unique opportunity to craft a space entirely from scratch, tailored to reflect not just luxury, but also the nuances of their lifestyle. Every element was thoughtfully conceptualized, blending sophistication with comfort, elegance with functionality. From spatial planning to material selection, we focused on creating an environment that feels both timeless and personal



Floor Plan

Mood Board





What we did:

High above the vibrant pulse of Hyderabad, on the 22nd floor of a landmark building, a 4BHK flat quietly weaves a tale of warmth, comfort, and mindful design. Surrounded by a tapestry of other homes in one of the city's most sought-after locations, this residence stands out—not for ostentation, but for the subtle luxury of thoughtful detail.

Step inside, and the world softens. The interiors are a masterclass in restraint: neutral hues flow seamlessly from room to room, creating a calming backdrop that lets the family's life and laughter take center stage. Every material has been handpicked for its tactile comfort—smooth wooden floors, soft-textured fabrics, and stone accents that invite you to linger a little longer.

The furniture, curated with care, matches the home's serene palette. Plush sofas beckon in the living room, while dining chairs and tables echo the same understated elegance. Each piece feels like it belongs, not just to the space, but to the story of those who live here.

Automated blinds and curtains glide open at a touch, revealing sweeping city views or cocooning the home in privacy as dusk falls. These smart touches blend seamlessly with the interiors, offering both convenience and a sense of quiet sophistication.



The modular kitchen is the heart of the home—sleek, efficient, and always ready for a family meal or late-night conversation. Full-length wardrobes line the bedrooms, their design echoing the home's theme, offering ample storage without ever feeling imposing.

Every corner, from the sun-drenched balcony to the cozy reading nook, is designed for both function and feeling. Here, warmth isn't just a temperature—it's the sense of being truly at home.

"Despite being surrounded by countless other dwelling units, this flat feels like a private retreat. The careful selection of materials, the harmony of colors, and the integration of technology all come together to create a space that is both modern and timeless.

This is not just a flat; it's a sanctuary in the sky—a place where every detail is a reflection of the family's desire for comfort, beauty, and a life well-lived.

Project: The Urban Fold

Location: Hyderabad

Year: 2021

Floor area: 3527 Sft

Type: Flat

Brands: Edison, Atomberg, Hettich, Asian Paints, Paradigm, Saint Gobain,

Furniture: Imported

Brief:

The client required a modern, elegant residence designed with a focus on neutral tones and contemporary furniture. The overall aesthetic was intended to be clean, minimal, and functional, with an emphasis on open layouts, natural light, and understated sophistication. Materials such as wood veneers, matte finishes, and textured fabrics were chosen to add warmth and depth, while maintaining a clutter-free and cohesive look. Key spaces like the living area, kitchen, and study nook were planned to reflect a balance of style and practicality, with integrated lighting and thoughtfully curated design elements throughout.



Floor Plan

What we did:

Nestled quietly in the heart of the city, this residence tells a story of understated elegance and thoughtful living. Designed with a seamless blend of neutral color palettes, rich walnut veneers, and pops of bright, expressive hues, the home is a tribute to modern comfort and timeless design.

As you step inside, you're greeted by a calming canvas of soft greys, warm beiges, and crisp whites. These neutral tones serve as the perfect backdrop, allowing the textures and materials to take center stage. Walnut-finished surfaces run through the space—on walls, furniture accents, and cabinetry—adding warmth, depth, and a grounding presence that feels both luxurious and lived-in.

The furniture is unmistakably contemporary—clean lines, sleek silhouettes, and a commitment to functionality without sacrificing style. Each piece has been carefully chosen to echo the simplicity of the space, yet stand out in its own right. Subtle metallic finishes, plush fabrics, and ergonomic design make everyday living feel effortlessly refined.





In contrast to the calm, earthy tones, vibrant bursts of color are woven into the interiors like brushstrokes on a modern painting. A mustard accent chair, a teal artwork, or coral cushions break the monotony and inject joy into every corner, reflecting the personality of those who live here—grounded, yet full of life.

Lighting plays a starring role in this story. Strategically placed warm white lights, soft cove lighting, and elegant pendant fixtures ensure that every room is bathed in a welcoming glow. Whether it's the natural daylight streaming through wide windows or the ambient lights that come alive in the evening, the home feels bright and alive at all times.





The overall design philosophy is one of modern minimalism with character—nothing is excessive, yet nothing is forgotten. Every surface, every texture, every object has a place and purpose, creating a rhythm of harmony and balance throughout.

This home is not just a space—it's a feeling. A feeling of calm after a long day. A place where memories are made, laughter is shared, and every element around you contributes quietly to a beautiful, curated life.

Project: Opal Oasis

Location: Hyderabad

Year: 2023

Floor area: 4285 Sft

Type: Flat

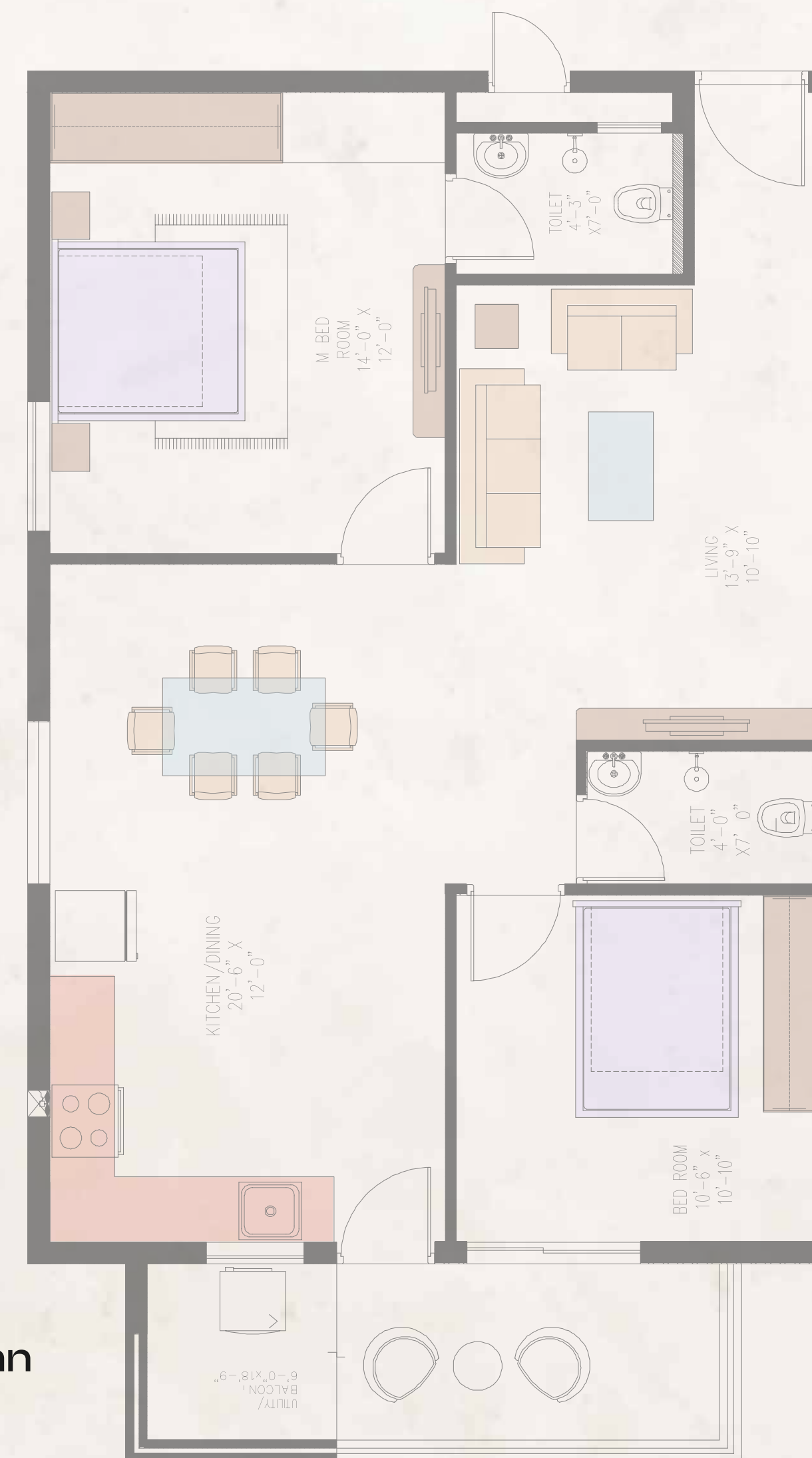
Brands: Edison, Atomberg, Hettich, Asian Paints, Paradigm, Saint Gobain,

Furniture: Imported

Brief:

The client envisioned a modern, minimalistic residence with a focus on clean lines and a subtle, neutral color palette dominated by warm beiges. The overall design was intended to evoke a sense of calm, elegance, and visual harmony, achieved through streamlined layouts, uncluttered surfaces, and the strategic use of space. To introduce contrast and visual interest, the client preferred the use of accent highlighters in furniture—such as bold upholstery, sculptural forms, or statement pieces—while keeping the overall look refined and understated. The design emphasized material richness, soft textures, and natural light, resulting in a home that felt both serene and sophisticated.

Floor Plan



What we did:

In the heart of a serene neighborhood stands a home that speaks softly, yet leaves a lasting impression. It's a space where timeless materials meet contemporary sensibilities—where every corner is curated, not just for how it looks, but for how it feels to live in.

The story begins in tones of warm beige, where walls, upholstery, and flooring create a cocoon of calm. It's a color that whispers elegance, never overwhelming—just gently grounding. Then come the shades of blue—from dusky navy to powdery sky—woven into the space like the rhythm of a slow, comforting melody. Together, they create a palette that's serene, yet full of depth.



And just when you think the home is done revealing itself, it catches the light—golden accents glinting on mirror frames, trims, light fixtures, and soft metallic finishes. They don't shout for attention; they simply exist—quietly elevating everything around them.

The walls tell their own story, clad in marble that feels both ancient and modern, bold and restrained. The veins of stone move across surfaces like art—unique in pattern, eternal in presence. This marble detail becomes a backdrop for everything else: a canvas that celebrates texture and light.



At the center of the home lies the kitchen, where form meets function with unapologetic clarity. It's a modern space, yet full of character. The cabinets are fitted with sleek, thoughtfully selected handles—not just for utility, but as subtle design elements in their own right. The brushed gold and matte black finishes echo the home's overall palette, offering tactile contrast against smooth laminate or veneer finishes. Every drawer, every handle, opens with purpose. The kitchen invites not just cooking, but conversation.

In one corner of the house, there's a space that speaks to today's rhythm of life—an innovative work and study nook. Designed with creativity in mind, it balances structure and inspiration. Whether it's a floating desk set against marble cladding, or a recessed bookshelf carved into the wall, the space is clever, calming, and effortlessly usable. Here, productivity meets beauty—and it's the kind of space that makes working from home feel less like a necessity and more like a luxury.

Lighting, throughout the home, is more than just illumination—it's an emotion. Natural light floods in by day, bouncing gently off marble and glossy finishes. By evening, the chandeliers take over—contemporary yet classic, casting golden warmth across rooms. In every flicker, there's a softness, a celebration of design that doesn't overpower but enhances.

This residence is more than a composition of materials and furniture. It's a quiet retreat, a personal statement, a canvas for daily living. It's where timeless textures meet present-day living—a home where beauty doesn't ask to be noticed, but is always felt.



Project: Manor Eclectica

Location: Hyderabad

Year: 2022

Floor area: 1745 Sft

Type: 4 BHK

Brands: Edison, Atomberg, Hettich, Asian Paints, Saint Gobain,

Furniture: Imported

Brief:

The owners, a young couple with a keen eye for design and a passion for the past, wanted a space that was not just beautiful but intentional. They approached this home not as a project, but as a canvas. They wanted a space that held character, not clutter—a place where style didn't come at the cost of function. The result is an abode that's equal parts charming and clever. What emerged is a residence that lives and breathes eclectic vintage charm, while still ticking every box for modern city living—maximum storage, updated systems, and interiors that breathe fresh air and clarity.



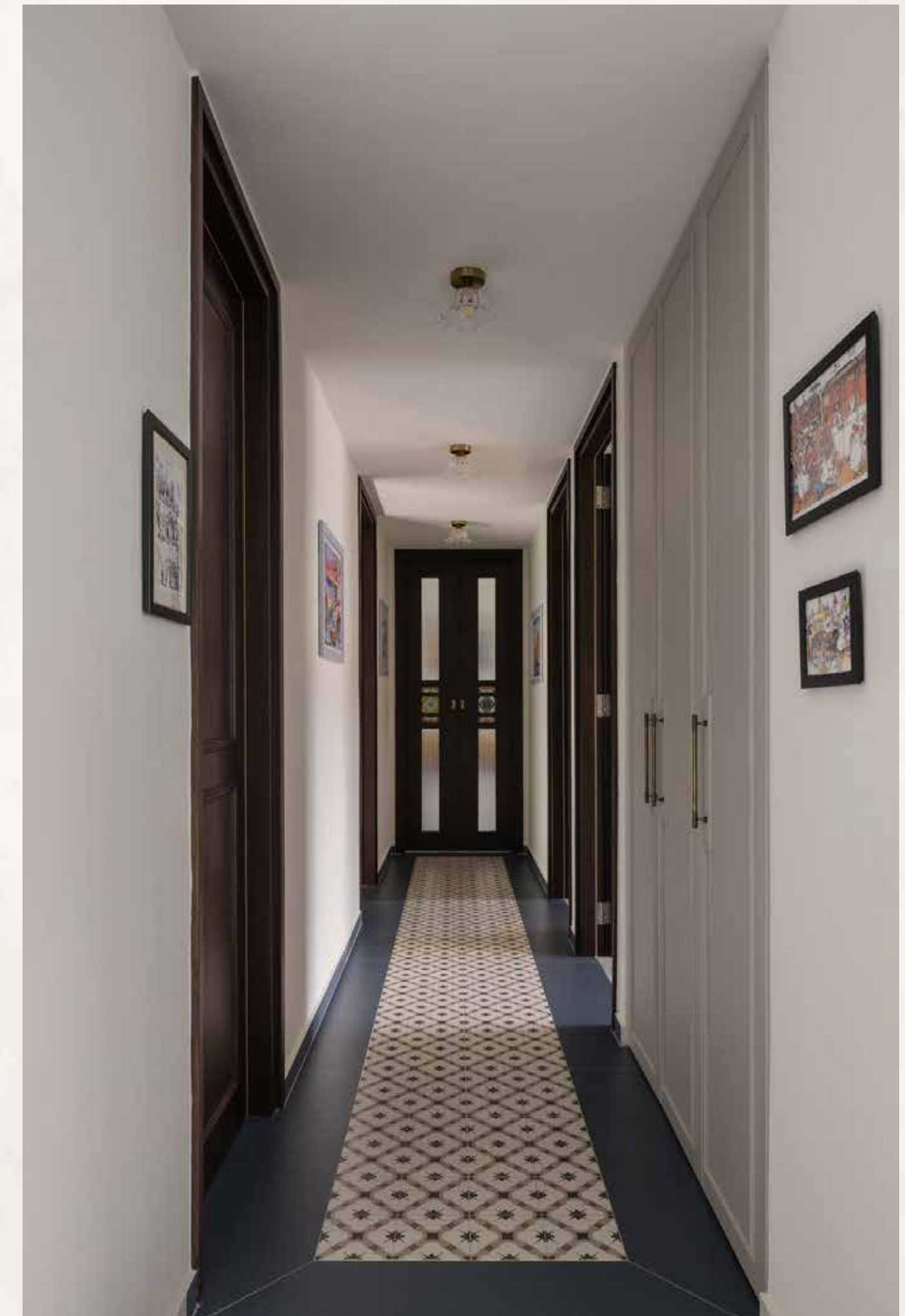
What we did:

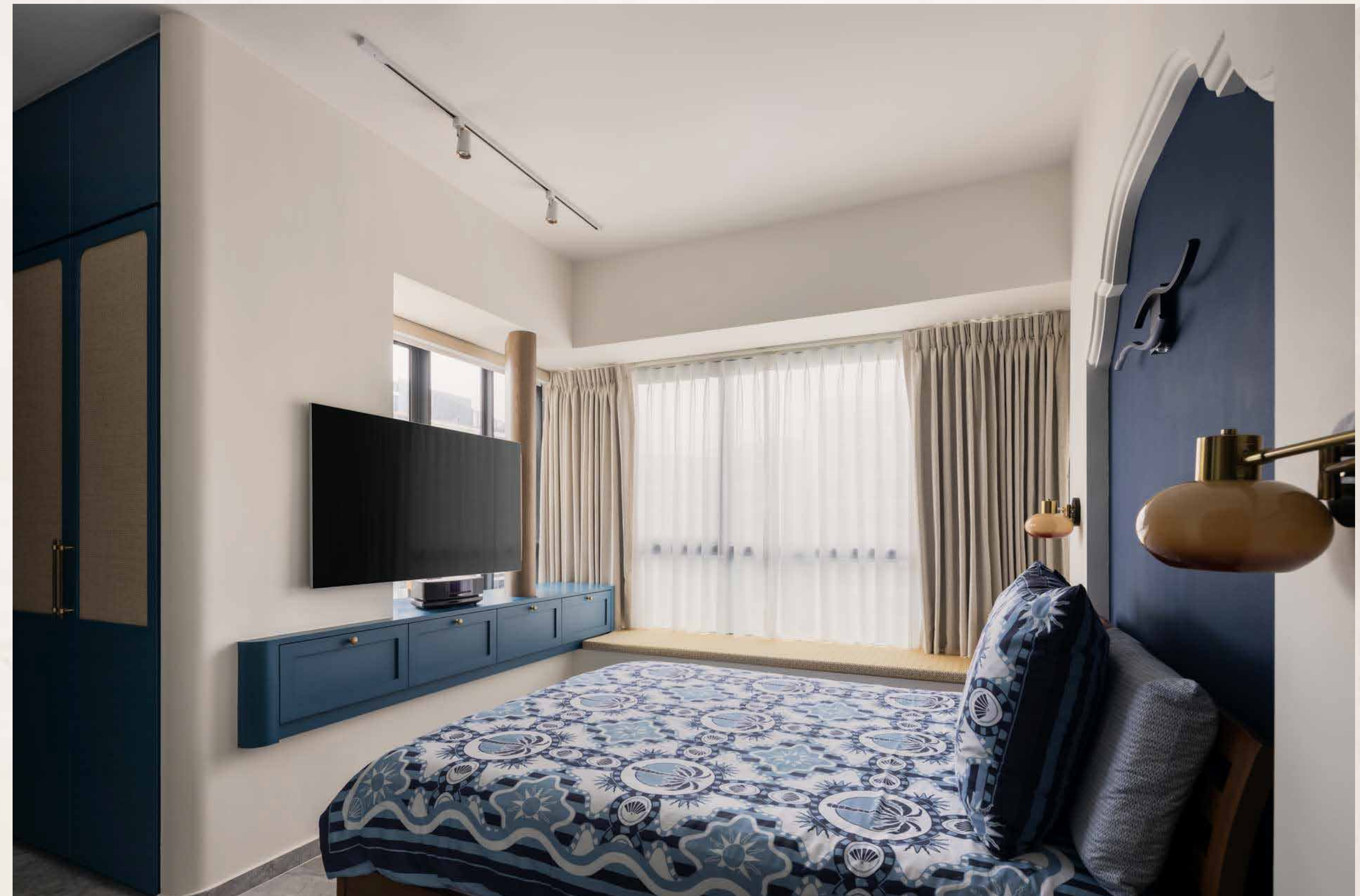
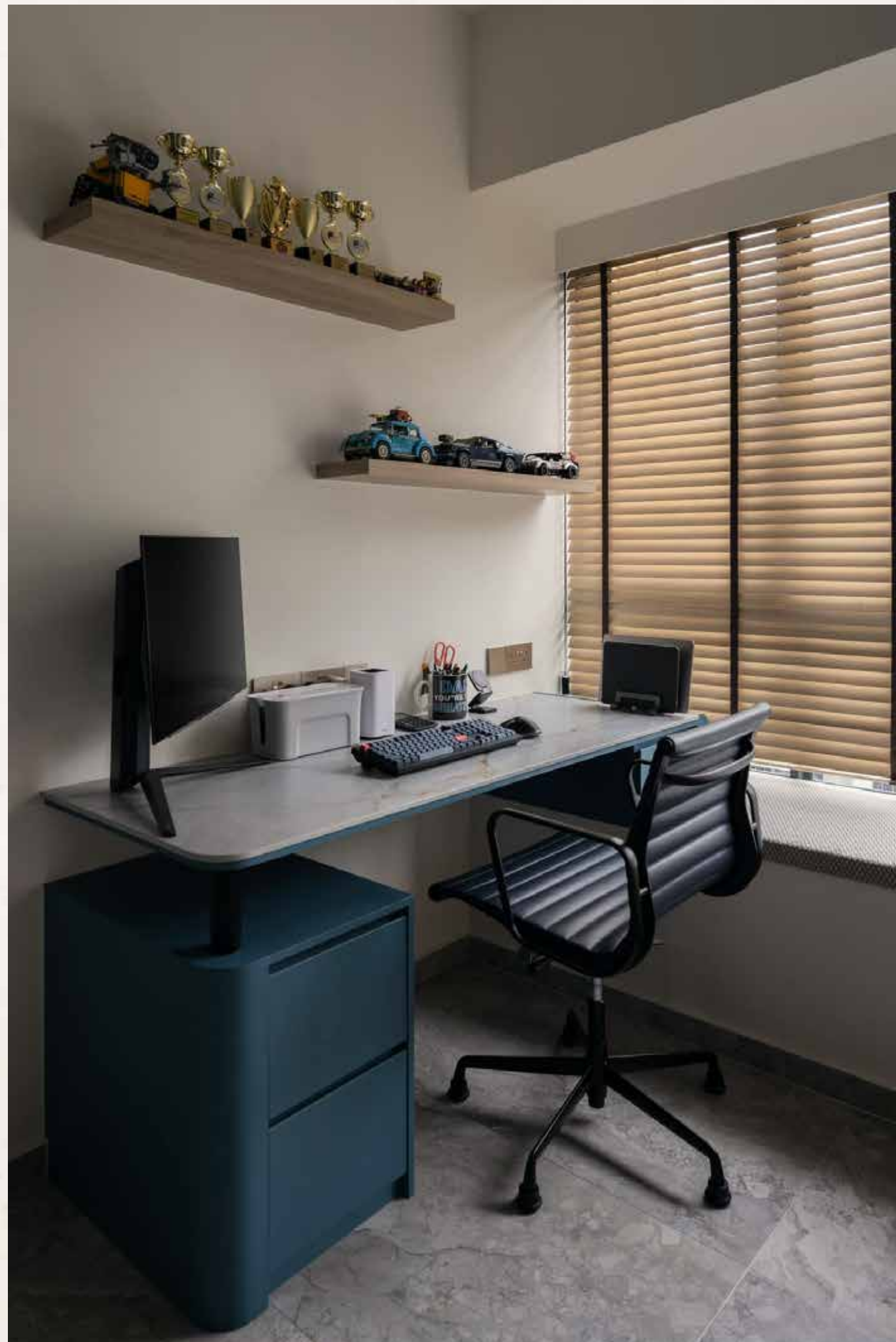
In one of Hyderabad's most sought-after neighborhoods, amidst tree-lined avenues and timeless city charm, stands a 4BHK residence that feels like a beautifully lived-in novel—one that's been rewritten for the present day, without losing sight of its vintage soul.

At its core, this home is a story of contrasts harmonized. Eclectic in spirit and vintage in style, it blends the warmth of old-world charm with the crisp clarity of modern design. Every detail—from the patina of restored wooden accents to the careful curation of textures and colors—has been thoughtfully orchestrated to create an interior that feels layered, lived-in, and deeply personal.

The interiors carry a refined quietude. There's a softness to the palette—muted sages, dusty pinks, warm creams, and occasional bursts of indigo or ochre—that calms the senses while allowing key pieces to stand out. Natural light pours through wide windows framed with elegant drapes, casting gentle shadows on curated vignette.

Bright, functional, and full of soul. The kitchen merges retro charm with sleek functionality. Open shelves display an enviable collection of hand-thrown ceramic ware, but smart pull-out storage systems and deep drawers ensure that every utensil and spice jar is accounted for.





Each of the four bedrooms has its own identity, but a common thread runs through—character, comfort, and quiet sophistication. Storage is abundant but never overwhelming—full-height wardrobes are custom-made with cane inlay and antique knobs, seamlessly integrating with the room's decor.



Even the bathrooms carry forward the vintage-modern mix. Think patterned floor tiles, antique gold fixtures, and classic console sinks, paired with state-of-the-art water-saving tech and hidden storage behind mirrors and under counters. The utility and service areas remain tucked out of view, but are just as thoughtfully designed—with space for everything from laundry systems to cleaning supplies.

This is not a house that was decorated; it was composed. There's intention behind every piece, every palette choice, and every material used. It's a home that doesn't scream for attention, but invites you to linger, to notice, to feel. Every corner reveals a new detail, yet nothing feels overwhelming or out of place.

Project: Modern Brown

Location: Hyderabad

Year: 2023

Floor area: 1511 Sft

Type: 3 BHK

Brands: Hettich, Asian Paints, Paradigm, Saint Gobain,

Furniture: Customized

Brief:

The homeowners wanted a stylish yet practical space, with special attention to the communal areas where they spend most of their time. They requested a standout design element—fulfilled through custom wood slat detailing that brings warmth and continuity throughout the home.

To save floor space, a concealed standing vanity was built behind wood slats, utilizing vertical wall space while maintaining a seamless look. The client also requested a moody, intimate theme for the living room, contrasted with a bright, airy bathroom for clear visual separation.



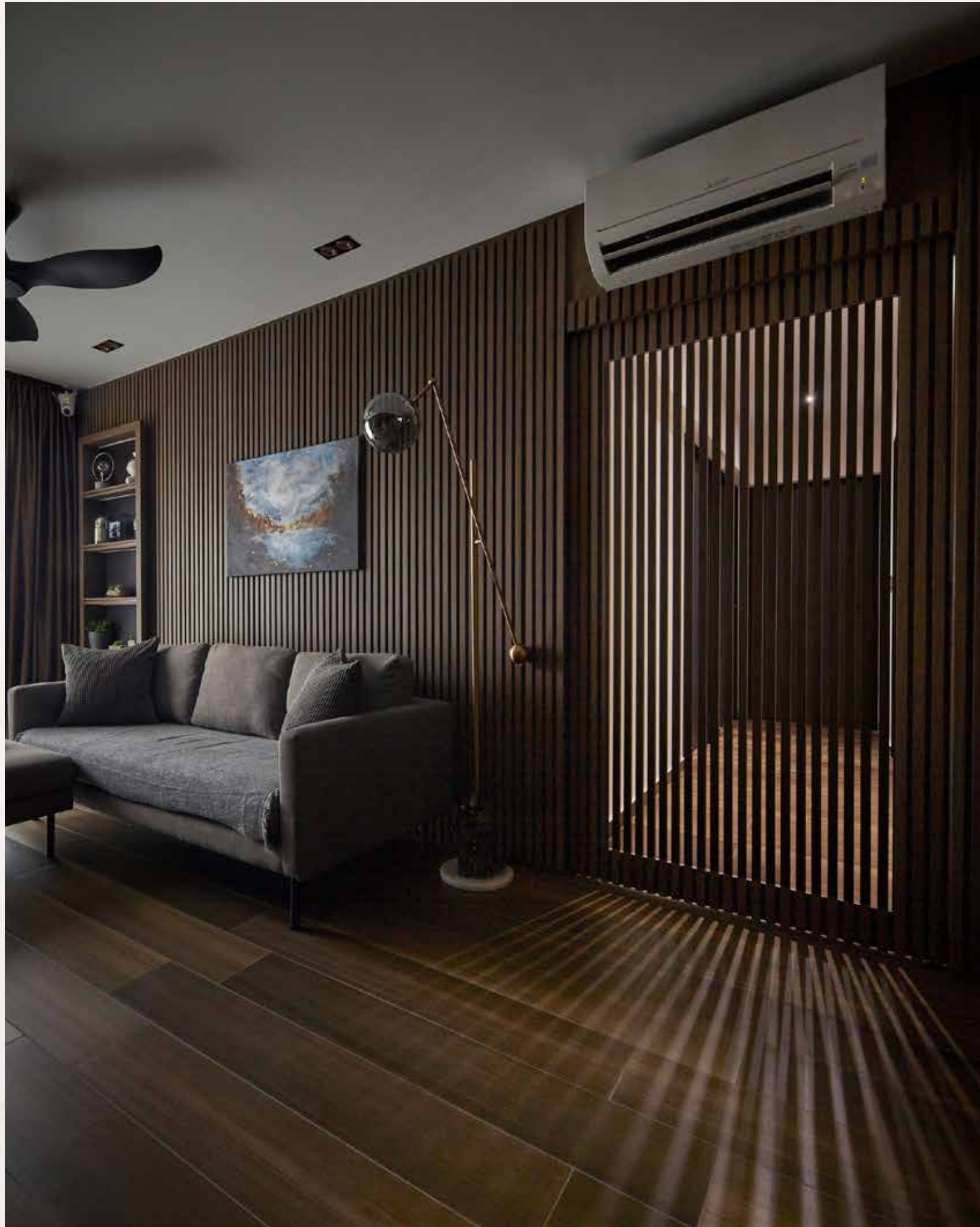


What we did:

Step inside, and you're immediately embraced by an atmosphere of quiet sophistication—where dark wood undertones weave through every corner, wrapping the home in a cloak of warmth and understated grandeur. This isn't just a space; it's an experience. From the first step into the foyer, there's a sense that something unique awaits—something far removed from the traditional expectations of a flat.

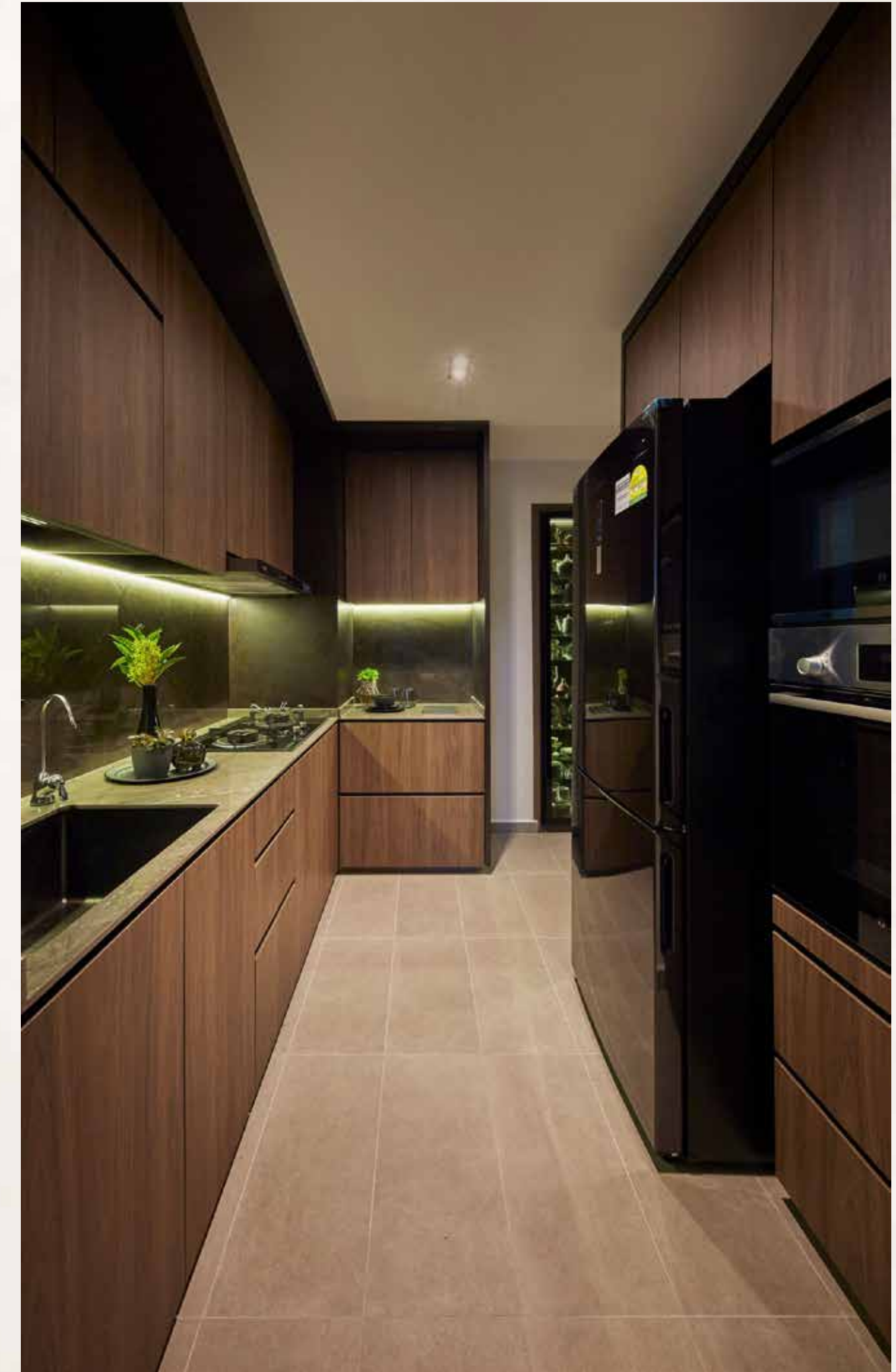
The entrance opens into a grand, almost theatrical transition, where wood slat feature walls stand tall, leading the eye and the soul deeper into the heart of the home. These slats don't just serve as visual anchors; they carry a sense of rhythm, echoing throughout the interiors as subtle partitions, even transforming into a sliding door that reveals the private quarters beyond—cleverly concealed yet easily accessible. The ceiling remains untouched here, allowing openness to counterbalance the rich tones and maintain an airy, expansive feeling.

This home has been designed with intention, where each element contributes to a larger narrative of modern luxury softened by organic texture. The palette—a thoughtful blend of three distinct wood tones—brings depth, dimension, and a quiet complexity to the interiors. It's a palette that doesn't shout for attention, but rather invites you to linger, to notice how each surface tells its own story.



Lighting becomes more than just function—it's mood, it's emotion, it's the subtle play between shadow and glow. Carefully layered lighting features are used not just to brighten, but to define, to shape the atmosphere from one space to the next. They balance the moody undertones of the wood, offering moments of brilliance that contrast beautifully with the home's mysterious flair.

What emerges is a seamless blend of raw timber character and modern refinement. It's a sanctuary where sensual intimacy meets elegant restraint—where every line, every material, every detail feels intentional. The result is a therapeutic retreat for the senses; a residence that doesn't just shelter, but elevates everyday living into a serene, immersive experience.



Project: The Lightbox

Location: Hyderabad

Year: 2024

Floor area: 1684 Sft

Type: 3 BHK

Brands: Hettich, Asian Paints, Paradigm, Saint Gobain,

Furniture: Imported

Brief:

The homeowners wanted a Modern Contemporary design that could gracefully adapt to evolving style trends while remaining versatile enough for daily life. The designer took this opportunity to weave in the family's personal tastes and distinctive fixtures, ensuring the space would be a true reflection of their character and lifestyle.

The result is a carefully balanced palette of harmonious colors and bold patterns that set a dynamic yet welcoming tone—creating a home that's both stylish and genuinely lived-in.





What we did:

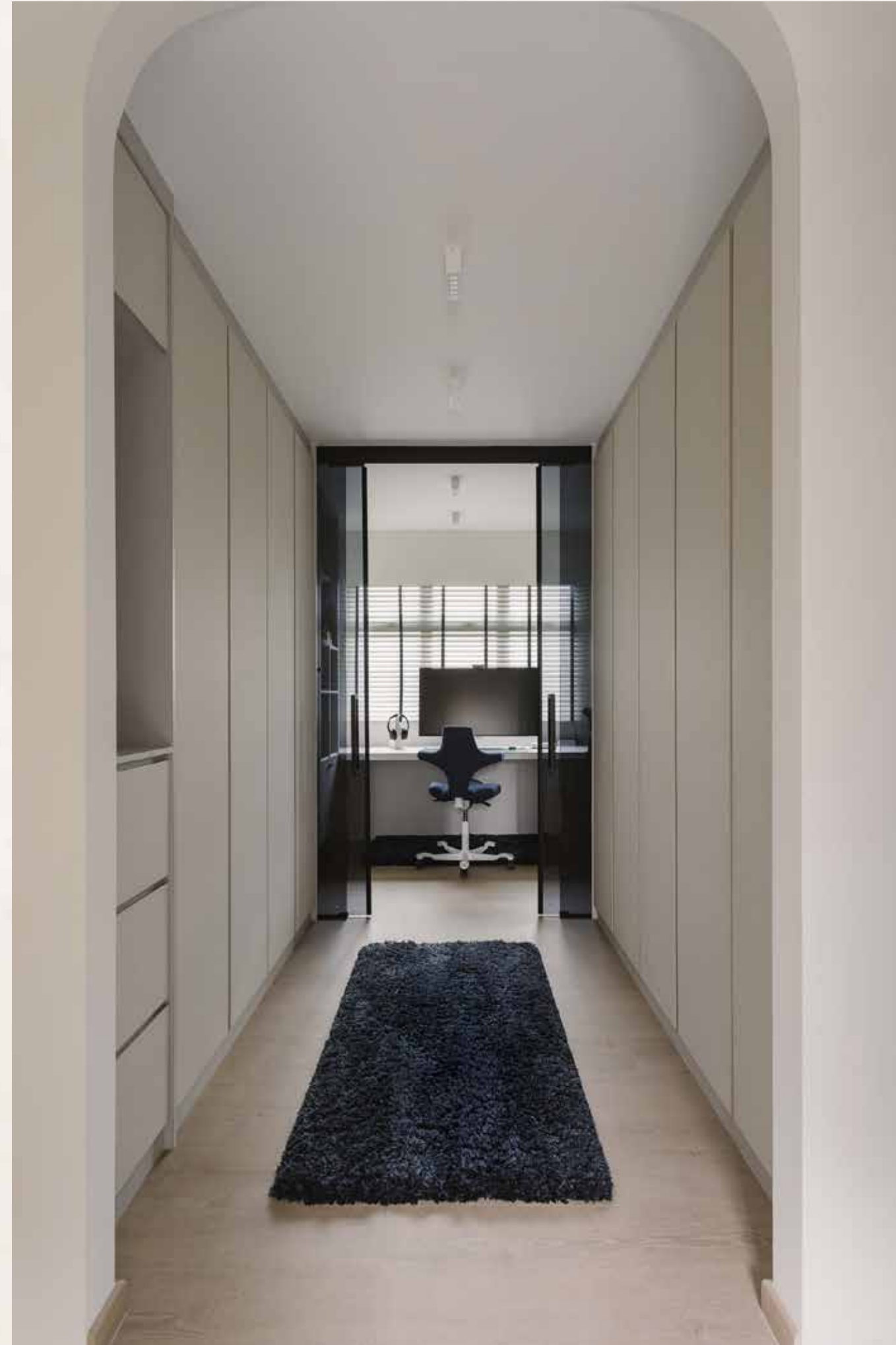
There's a quiet charm to this Modern Contemporary home—one that greets you the moment you step inside. A medley of warm wood tones, soft textures, and calming blue hues gently unfold, creating an atmosphere that feels both refined and deeply comforting. This is a space thoughtfully designed not just for living, but for being.

At the heart of the home lies an open-plan living and dining area—a seamless social hub where the homeowners, along with their beloved feline companions, share daily moments of calm and connection. Furnishings are carefully curated to define zones within this open space, creating a sense of depth and flow. Subtle blues and decorative tiles add warmth, art, and personality throughout.

A gentle curve in the architecture guides you further into the home, where a soft archway leads to a walk-in wardrobe and a private home office. Here, natural light pours in through generous windows, casting a golden glow that makes this tucked-away corner feel serene and inspiring—a perfect retreat for moments of focus and quiet.

The story continues in the master bathroom, where rich textures and deep tones come together in a cocoon of indulgence. It's a space designed for restoration, where every surface and shade contributes to a feeling of calm luxury. Whether it's a slow morning or the close of a long day, this bathroom offers more than just utility—it offers pause, comfort, and a moment to breathe.

In every detail, this home weaves together warmth, texture, and personality. It's a modern sanctuary—grounded in style, yet made deeply personal through thoughtful design and the presence of everyday joy.



Project: The Still Nest

Location: Hyderabad

Year: 2023

Floor area: 2000 Sft

Type: 3 BHK

Brands: Edison, Atomberg, Hettich, Asian Paints, Paradigm, Saint Gobain,

Furniture: Customized

Brief:

The clients came to us with a clear vision: they wanted a home that felt calm, open, and grounded—a space that would offer a sense of ease at the end of a long day. They asked for interiors that embraced minimalism without feeling cold, where every element served a purpose and nothing felt excessive. Warm tones, clean lines, and natural textures were important to them, along with a layout that felt uncluttered and breathable. More than anything, they wanted their home to reflect a lifestyle rooted in intentional living and quiet sophistication.



What we did:

Tucked away in a quiet neighborhood of Hyderabad, this 3BHK residence was imagined as a retreat from the noise—a space where simplicity isn't stark, but soothing. From the moment you enter, you're greeted by an atmosphere of calm: soft light, earthy tones, and a sense of quiet restraint.

The homeowners envisioned a home where every detail had purpose—a place to unwind, reflect, and live intentionally. We translated this vision into a design language that follows the “less is more” philosophy, with every corner balancing functionality with quiet elegance.



Warm, neutral hues—creamy whites, muted taupes, gentle beiges—set the stage. Rather than competing for attention, each material complements the next. Walls are dressed in soft textures; cabinetry wears matte finishes. Natural light is allowed to flow freely, dancing off clean surfaces and subtle textures.

In the living and dining areas, furniture is low, sculptural, and minimal. Open spaces allow movement and breathing room. No clutter. Just a few handpicked pieces—a ceramic vase here, a linen throw there—each telling a story of intention and simplicity.

The kitchen, sleek and handle less, speaks to the beauty of functionality. Everything is tucked away, leaving behind a space that feels effortless to navigate.



Each bedroom was designed as a sanctuary, especially the master suite—anchored by a fabric-upholstered headboard and wardrobe shutters finished in soft linen textures. Light flows in, curtains stay sheer, and even the decor knows when to whisper.

The home doesn't shout its presence—it invites you in, slowly. There's no excess here. Just calm, warmth, and the quiet luxury of space well used.

This project is a reminder that design doesn't need to be loud to be powerful. Sometimes, the most meaningful spaces are the ones that know how to pause, breathe, and just be.



LET'S CONNECT



3rd Floor, Sath Surya Square,
8-2-293/82/A/646A, Road No.36,
Jubilee Hills, Hyderabad -500033

+91 73307 21515
info@aakritiliving.com
aakritiliving.com